



Vesson Ave Apartments

2420 Vesson Ave Durham, NC

Vesson Ave Apartments are located in a quaint and quiet residential community of Southwest Central Durham, adjacent to historic Lakewood and Norwood Ave neighborhoods. Within walking distance to shopping, restaurants, schools and Wrightwood Park. These one-bedroom apartments are only two miles from Duke University, Downtown Durham, and Brightleaf Square.

Affordable and convenience make Vesson Ave Apartments the ideal place to call home!!

Amenities

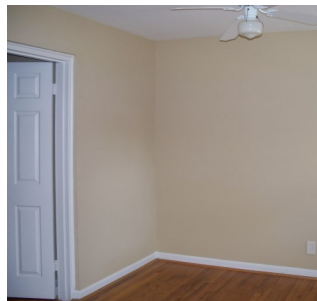
- Modest bedroom (10' x 11')
- Living space (10' x 15.5')
- Energy Efficient appliances
- Covered Porch for relaxing
- Heating and central air conditioning
- Range and Refrigerator
- Hardwood Floors
- Ample Onsite Parking
- On bus line
- Walking distance to restaurants, YMCA and Lakewood shopping center
- Two miles from Downtown Durham

Qualifications

Minimum and Maximum Income Requirements Apply

Unit Details

- All units are 1 bedroom
- 500 square feet
- Utilities **not included** with rent: **Electric**
- Water included in the rent





Vesson Ave Apartments

2420 Vesson Ave Durham, NC

Floor Plan

1 Bedroom 1 Bath, 500 Sq. Ft.



Map

